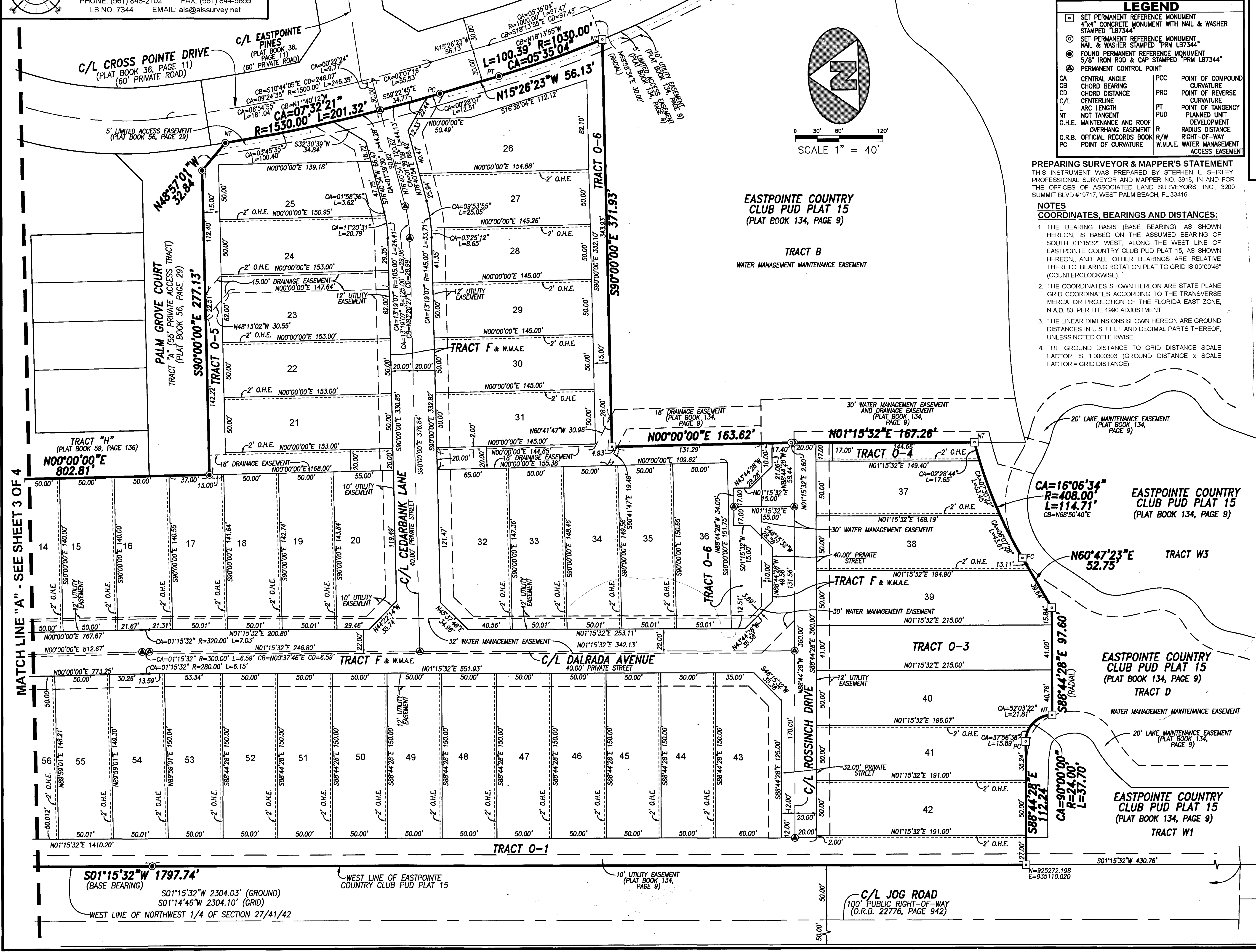


ASSOCIATED LAND SURVEYORS, INC.
 3200 SUMMIT BLVD #19717
 WEST PALM BEACH, FL 33416
 PHONE: (561) 848-2102 FAX: (561) 844-9659
 LB NO. 7344 EMAIL: als@alssurvey.net

EASTPOINTE COUNTRY CLUB PUD PLAT 16

BEING A REPLAT OF TRACT C AND TRACT E, EASTPOINTE COUNTRY CLUB PUD PLAT 15, AS RECORDED IN PLAT BOOK 134, PAGE 9, PUBLIC RECORDS OF PALM BEACH COUNTY, FLORIDA, LYING IN SECTION 27, TOWNSHIP 41 SOUTH, RANGE 42 EAST, PALM BEACH COUNTY, FLORIDA

126

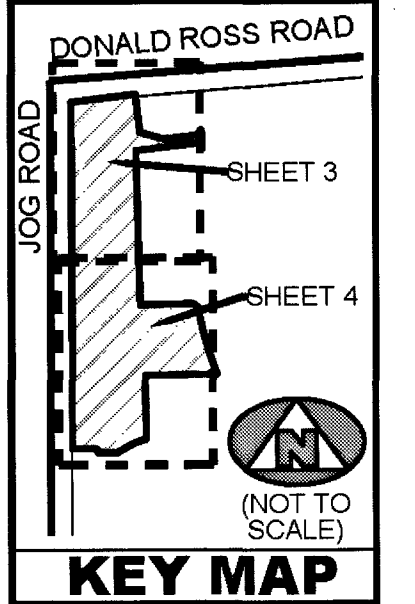


LEGEND

□	SET PERMANENT REFERENCE MONUMENT 4"x4" CONCRETE MONUMENT WITH NAIL & WASHER STAMPED "LB7344"	○	SET PERMANENT REFERENCE MONUMENT, NAIL & WASHER STAMPED "PRM LB7344"
●	FOUND PERMANENT REFERENCE MONUMENT 5/8" IRON ROD & CAP STAMPED "PRM LB7344"	○	PERMANENT CONTROL POINT
CA	CENTRAL ANGLE	PCC	POINT OF COMPOUND CURVATURE
CB	CHORD BEARING	PRC	POINT OF REVERSE CURVATURE
CD	CHORD DISTANCE	PT	POINT OF TANGENCY
C/L	CENTERLINE	PUD	PLANNED UNIT DEVELOPMENT
L	ARC LENGTH	R	RADIUS DISTANCE
NT	NOT TANGENT	R/W	RIGHT-OF-WAY
O.H.E.	OVERHANG AND ROOF OVERHANG EASEMENT	W.M.A.E.	WATER MANAGEMENT ACCESS EASEMENT
O.R.B.	OFFICIAL RECORDS BOOK		
PC	POINT OF CURVATURE		

PREPARING SURVEYOR & MAPPER'S STATEMENT
 THIS INSTRUMENT WAS PREPARED BY STEPHEN L. SHIRLEY, PROFESSIONAL SURVEYOR AND MAPPER NO. 3918, IN AND FOR THE OFFICES OF ASSOCIATED LAND SURVEYORS, INC., 3200 SUMMIT BLVD #19717, WEST PALM BEACH, FL 33416

- NOTES**
- COORDINATES, BEARINGS AND DISTANCES:**
- THE BEARING BASIS (BASE BEARING), AS SHOWN HEREON, IS BASED ON THE ASSUMED BEARING OF SOUTH 01°15'32" WEST, ALONG THE WEST LINE OF EASTPOINTE COUNTRY CLUB PUD PLAT 15, AS SHOWN HEREON, AND ALL OTHER BEARINGS ARE RELATIVE THERETO, BEARING ROTATION PLAT TO GRID IS 00°00'46" (COUNTERCLOCKWISE).
 - THE COORDINATES SHOWN HEREON ARE STATE PLANE GRID COORDINATES ACCORDING TO THE TRANSVERSE MERCATOR PROJECTION OF THE FLORIDA EAST ZONE, N.A.D. 83, PER THE 1990 ADJUSTMENT.
 - THE LINEAR DIMENSIONS SHOWN HEREON ARE GROUND DISTANCES IN U.S. FEET AND DECIMAL PARTS THEREOF, UNLESS NOTED OTHERWISE.
 - THE GROUND DISTANCE TO GRID DISTANCE SCALE FACTOR IS 1.0000303 (GROUND DISTANCE x SCALE FACTOR = GRID DISTANCE)



MATCH LINE "A" - SEE SHEET 3 OF 4

S01°15'32"W 1797.74'
 (BASE BEARING)
 S01°15'32"W 2304.03' (GROUND)
 S01°14'46"W 2304.10' (GRID)
 WEST LINE OF NORTHWEST 1/4 OF SECTION 27/41/42

C/L JOG ROAD
 100' PUBLIC RIGHT-OF-WAY
 (O.R.B. 22776, PAGE 942)

WEST 1/4 CORNER OF SECTION 27,
 TOWNSHIP 41 SOUTH, RANGE 42 EAST,
 FOUND PALM BEACH COUNTY BRASS DISK
 N=924841.528 E=935100.652